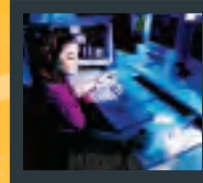
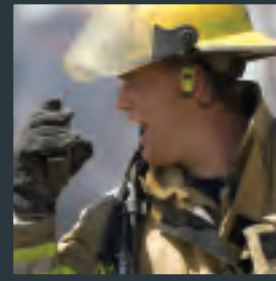


# CORPORATE CAPABILITIES STATEMENT



**CommsFirst, Inc.** provides innovative communication technologies, services, and operational methods to support federal, state, local, tribal, and private-sector preparedness and response efforts before, during, and after emergencies and crises.

Our managed services enable interoperable communications and information sharing for supporting first responders, enhancing homeland security, saving lives, and reducing economic losses from ineffective or uncoordinated response and restoration efforts. We deliver fully integrated operational and information networks so intra- and inter-agency personnel can access information specific to a response, collect and share content with each other, and leverage information and sensor services. Operational training is also a critical component of our offering.

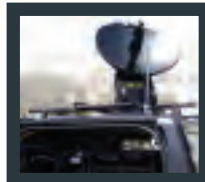
## TURNKEY CRISIS COMMUNICATIONS SERVICES

Our fully integrated services include:

- Consultation and preparedness assessments
- Training and certification programs
- Delivery of equipment and trained tactical personnel
- Terrestrial and space-based reach-back connections
- Fixed and mobile remote network access nodes
- First/last mile connections for users
- Operations centers: tactical and emergency
- Comprehensive logistics support
- Advanced information and cognitive tools
- Reconnaissance, sensor integration, and special services

Delivery platforms range from backpack configurations to fully integrated mobile command centers that can be deployed independently or in tandem, delivering a broad spectrum of technical capabilities over a wide coverage area. CommsFirst managed services deliver the infrastructure, tools, and cognitive services to support responders prior to, during, and after emergencies.

Public and private organizations can leverage CommsFirst's significant investment in technology assets, delivery mechanisms, and process improvements to mitigate outage risks and financial exposure. By procuring crisis-response communications as a service, operational budgets can be utilized, eliminating the need to tap shrinking capital expense budgets. CommsFirst also assumes ongoing fiscal responsibility for upgrading to best-in-breed technologies as they emerge.

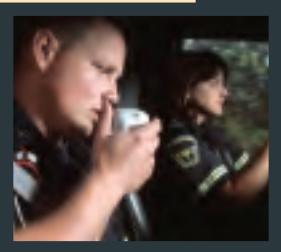
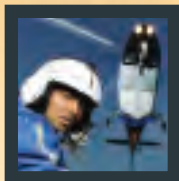


**OPERATIONAL NETWORK** | **Prepackaged Platforms for Rapid Deployment**  
*Assured delivery of business or mission-critical communications.*

Deployable Platforms	Core Capabilities
<p><b>Tactical Kits</b> Man-portable standalone solutions or network nodes</p> <p><b>Portable Kits</b> Pallet-ready integrated systems deployable for extended periods</p> <p><b>Operations Vehicles</b> SUVs equipped with integrated network service solutions</p> <p><b>Remote Operations Centers</b> Customizable, large-scale solutions for mobile command, control, and emergency operations</p>	<ul style="list-style-type: none"> <li>• Web, voice, data, video</li> <li>• Everything over IP (TCP/IP, IPv6)</li> <li>• Connectivity within minutes on-site</li> <li>• Satellite (all bands)</li> <li>• 384 Kbps to 10 Mbps+ data rates</li> <li>• Wireless (802.11a/b/g, 802.16)</li> <li>• Extendable wireless coverage</li> <li>• UHF, VHF, 700, 800 MHz radio</li> <li>• Radio bridging</li> <li>• Integrated video conferencing</li> <li>• Fax/copy/scan/print</li> <li>• Multiple encryption levels</li> <li>• Scalable to thousands of users</li> <li>• Self-contained, portable power</li> <li>• End-user device agnostic</li> <li>• Satellite radio and TV</li> </ul>

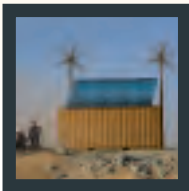
**INFORMATION NETWORK** | **Cognitive Services Enabling Interoperability**  
*Assured interaction between existing technology assets and others' systems and services.*

Cognitive Services	Core Capabilities
<p><b>Interoperability</b> Cross-domain communications and information sharing</p> <p><b>Directory Services</b> Expertise location</p> <p><b>Situational Awareness</b> Fusion of relevant people, sensors, and information services</p> <p><b>Distributed Collaboration</b> Discovery, collection, discussion, and intelligent information sharing</p>	<ul style="list-style-type: none"> <li>• Online and offline capabilities for use in austere environments</li> <li>• Full LMR and network interoperability</li> <li>• Online identification of experts and resources</li> <li>• Internet standards for true interoperability: SIP, XMPP, XML, SOA, SOAP, RSS/SSE</li> <li>• Publish/subscribe alerts and notifications</li> <li>• Wikis and RSS feeds</li> <li>• Point-to-point, decentralized (i.e., no servers required) information sharing</li> <li>• Sensor network integration</li> <li>• Incident command system, people finder, and other inter-agency structured data sharing</li> </ul>



**CRISIS MANAGEMENT SERVICES** | **Comprehensive Readiness, Response, and Recovery**  
*Rapidly sensing, responding to, and managing unplanned disruptive events as they occur.*

Crisis Management Services	Core Capabilities
<p><b>Consulting and Assessment</b> Risk assessment and mitigation planning</p> <p><b>Training and Certification</b> Classroom, field exercises, real-life deployments</p> <p><b>Field Operations Teams</b> Highly trained specialists deployed within hours</p> <p><b>Tactical Operations Centers</b> Redundant 24x7x365 centralized support</p> <p><b>Logistics Supply</b> Supply chain management</p>	<ul style="list-style-type: none"> <li>• BCRS and COOP planning</li> <li>• Equipment and operations certification</li> <li>• Tabletop and field exercises</li> <li>• Dispatch and coordination</li> <li>• News feeds and intelligence reports</li> <li>• Emergency medical transport</li> <li>• Transportable hybrid power</li> <li>• Portable shelters</li> <li>• Portable mess halls</li> <li>• Water transport</li> <li>• Field hospitals</li> <li>• Fuel transport</li> <li>• Forward base tents</li> <li>• Sleeping quarters</li> <li>• Sanitation</li> <li>• Fuel depots</li> </ul>



First to Connect  
in Crisis